

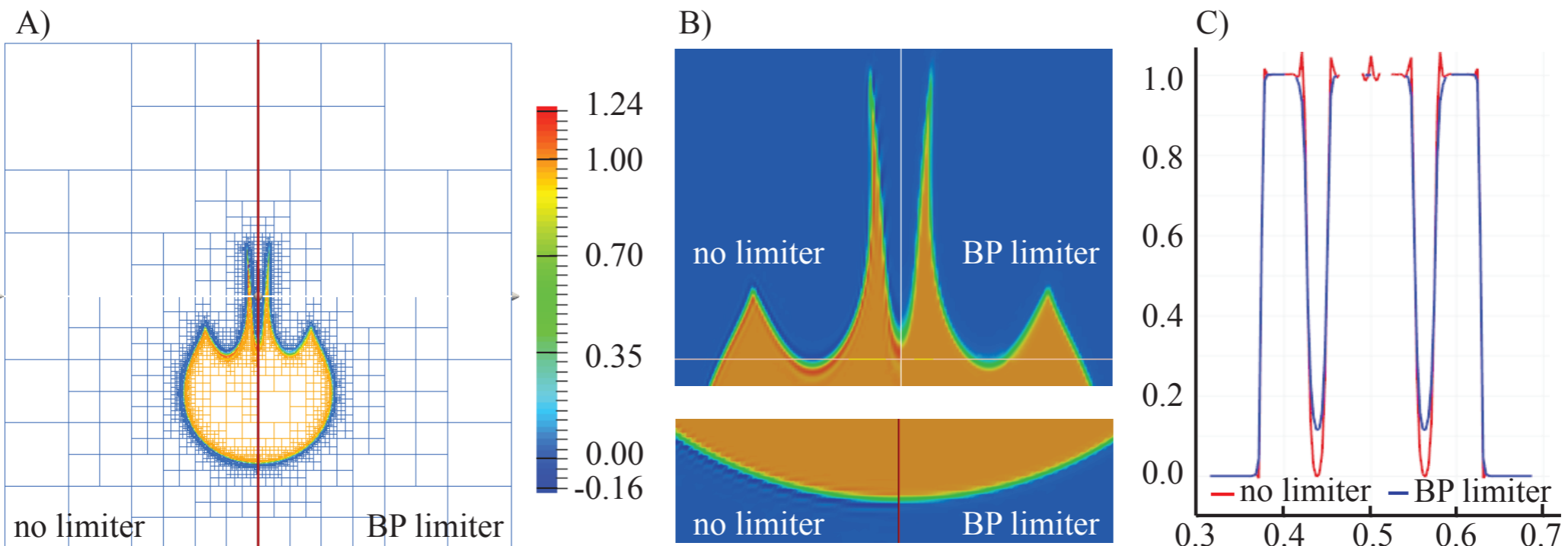
# A New DG Bound Preserving Compositional Advection Method in ASPECT

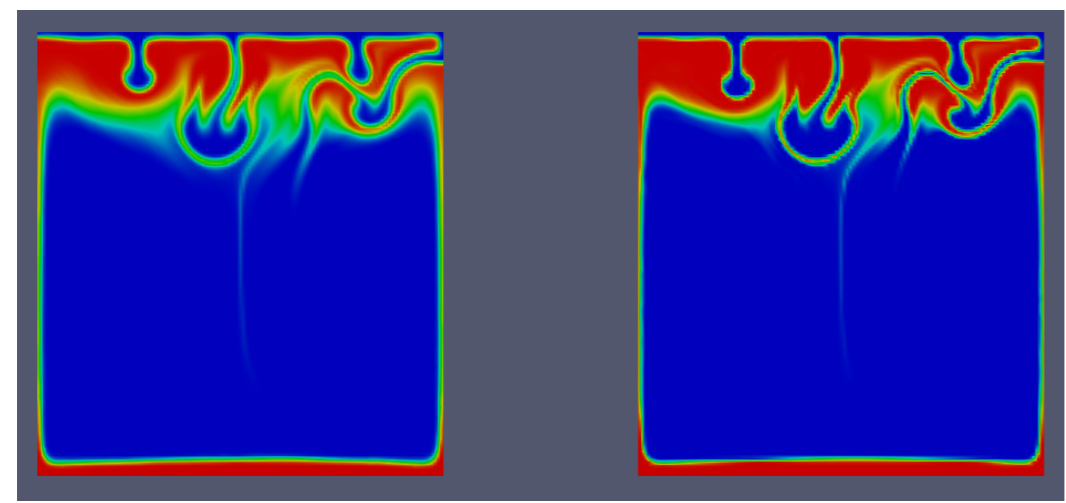
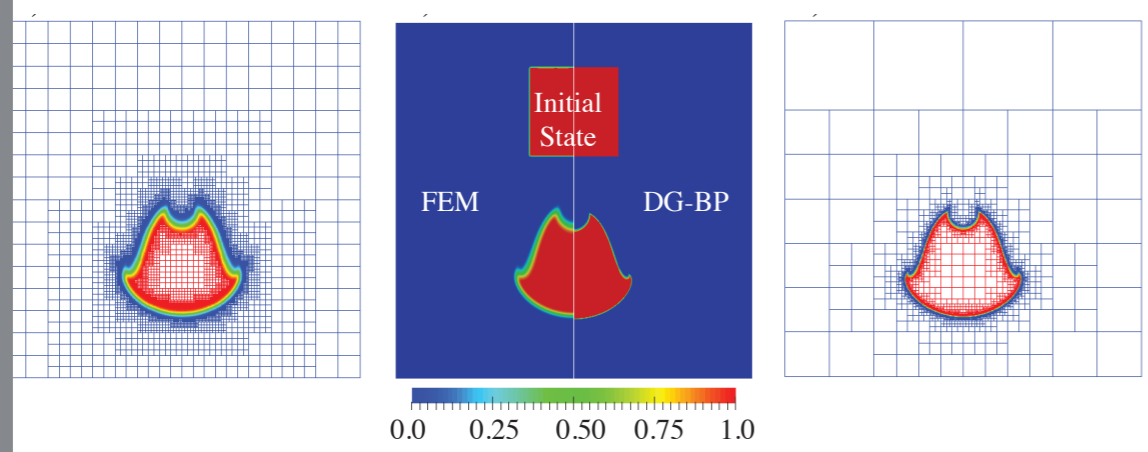
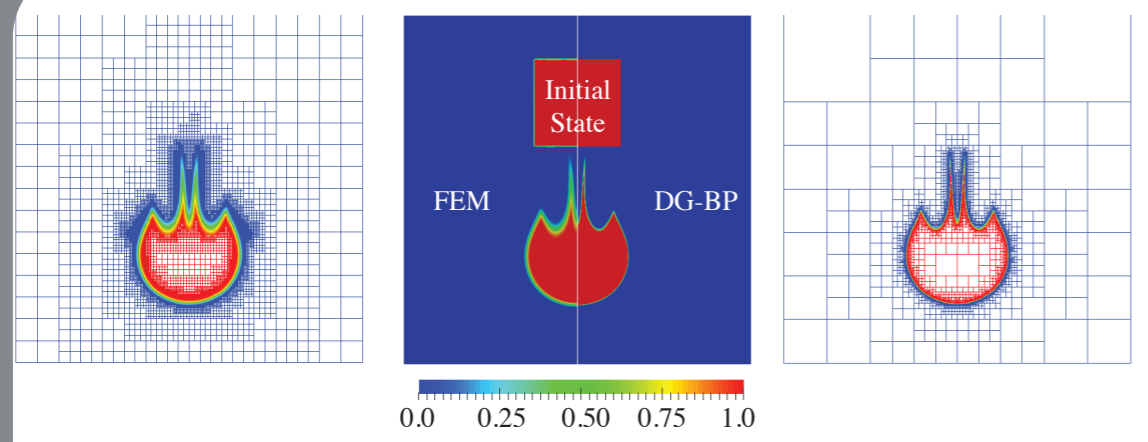
Ying He, Elbridge Gerry Puckett, and Magali I. Billen  
University of California, Davis

Discontinuous Galerkin (DG) method is good approach for solving transport problem

*BUT* stabilization techniques are necessary for the compositional equation

A bound preserving limiter works greatly with the DG method





If

**tracking compositional fields is important to you**

**want to know how and why the DG-BPL method work better for the compositional field equation**

**want to know how to implement the DG-BPL method in ASPECT**

**Please come to visit and you **CAN** find the answers in our poster!**